

KANTILAL CHIMANLAL

AHMEDABAD
SINCE-1913

CAST STEEL PARALLEL SLIDE BLOW OFF VALVE

FLANGED (TABLE J)

SPECIFICATIONS

'SANT' Cast Carbon Steel Parallel Slide Blow Off Valve
Rack & Pinion Operated
Renewable Monel Seats
Flanged Ends to BS:10 Table J
Suitable for Maximum BOP = 350 Psig
Maximum Recommended Temperature = 400°C
Supplied with MS Operating Key

TESTING & CERTIFICATION

Body Test Pressure 700 Psig Hyd.
Seat Test Pressure 700 Psig Hyd.

Test Certificate in Form IIIC as per IBR is furnished with every supply.

MATERIALS

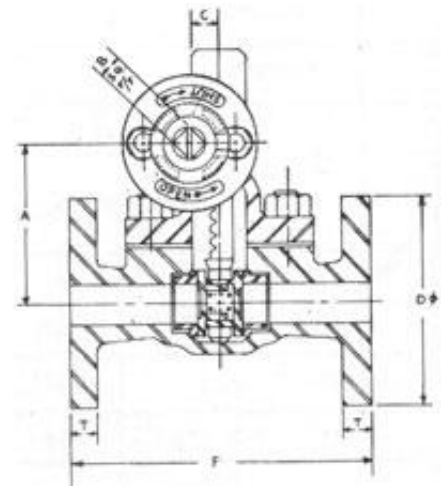
Components	Material	Material Specification
Body, Bonnet	Cast Carbon Steel	ASTM A 216 Gr.WCB
Stuffing Box, Gland, Rack & Pinion	Bronze	IBR 282(a)(iv) Gr.B
Body Seat Ring & Valve Discs	Cast Monel	Ni Cu Alloy
Springs	Spring Steel	IBR 307 to 314
Gaskets	Compressed Asbestos Fibre	IS:2712 Gr.C
Gland Packing	Graphited Asbestos	with Metal Reinforcement
Operating Key & Fasteners	Mild Steel	IS:226

DIMENSIONS

Nominal Size	F	A	B	C	D	T
25	178	138	16	18	4¾	¾
32	242	145	16	19	5¼	¾
40	267	171	16	20.5	5½	7/8
50	305	187	22	25.4	6½	1
65	330	208	22	28.5	7¼	1
(mm)	(mm)	(mm)	(mm)	(mm)	(inch)	(inch)

SANT

CS 4



Application

Water	Oil	Gas	Steam
●			●

KANTILAL CHIMANLAL
662/45, Kapasia Bazaar
Railway pura, Ahmedabad-3800 02
Gujarat (INDIA)

Ph.: +91 79 2217 0041 / 80
Fax: +91 79 2212 1863
Mobile: +91 98795 15172
E-mail : kc@kantilalchimanlal.net

' For Guaranteed Trouble Free Service '